

**HWHP MACHINES**  
 Non-abasive, no contact cleaning & degreasing for aluminum strip



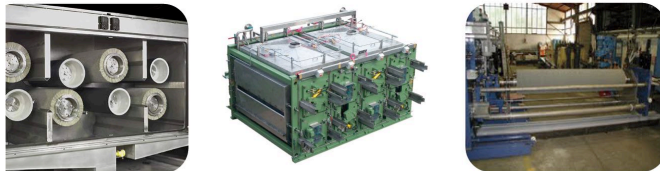
A method to remove rolling oil from metal strip using water at high temperature and pressure.  
 The system works in recirculation, thus removes the oil, filters and reheats the water.

**ENGINEERED BRUSH CORES, FLANGES, AND REPLACEMENT SHAFTS FOR YOUR EQUIPMENT**



**OUR MISSION**

WE STRIVE TO PRODUCE VALUE, NOT AMASS VOLUME, THUS WE ARE STRUCTURED TO MANUFACTURE CAREFULLY ENGINEERED MACHINES



**NEW, STATE OF THE ART FACILITY**

THE MOST ADVANCED EQUIPMENT HAS BEEN CAREFULLY SELECTED AND INSTALLED TO STREAMLINE OUR MANUFACTURING PROCESS. EXPANDING OUR CAPABILITIES, AND EXPEDITING TURNAROUND

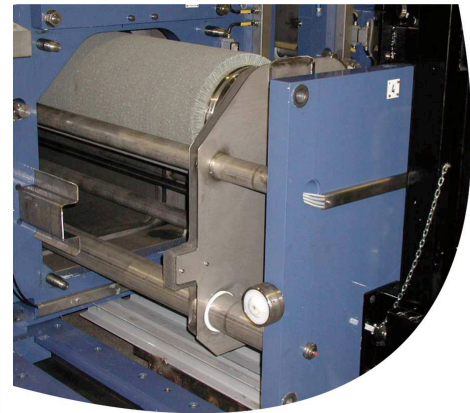


Member of  
  
 National Coil Coating Association



MEMBER OF  
  
 GALVANIZERS ASSOCIATION

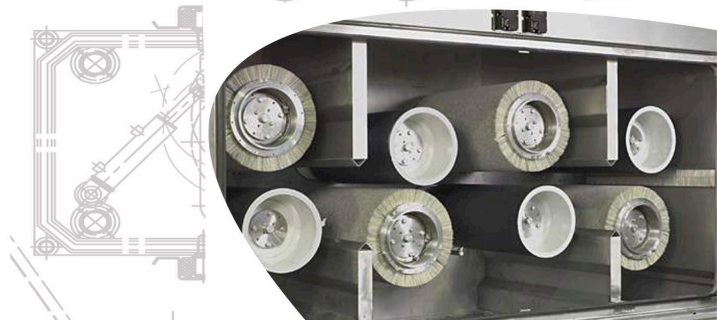
CONTACT US AT:  
 816-382-9150  
[INFO@ATLANTECHPROCESS.COM](mailto:INFO@ATLANTECHPROCESS.COM)  
[WWW.ATLANTECHPROCESS.COM](http://WWW.ATLANTECHPROCESS.COM)



**RETHINK BRUSHING**



**NEXT GENERATION OF MECHANICAL CLEANING TECHNOLOGY FOR COIL & PLATE**



We have been building cleaning and finishing machines for well over 60 years.

In doing so, we have looked at many process lines and listened to scrubber issues from maintenance, operations, and quality team members and have taken a fresh approach at what a brush scrubber should do.

We have hired the top engineers in Germany to design out the issues and engineer in the wants and needs of our customers.

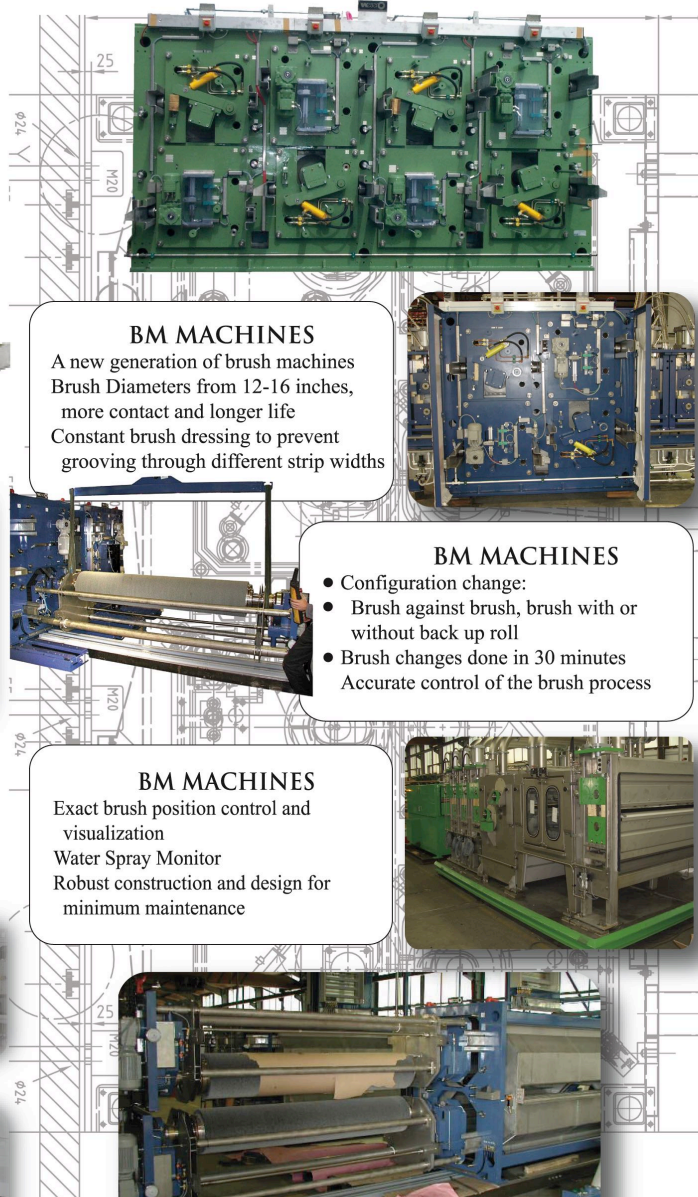
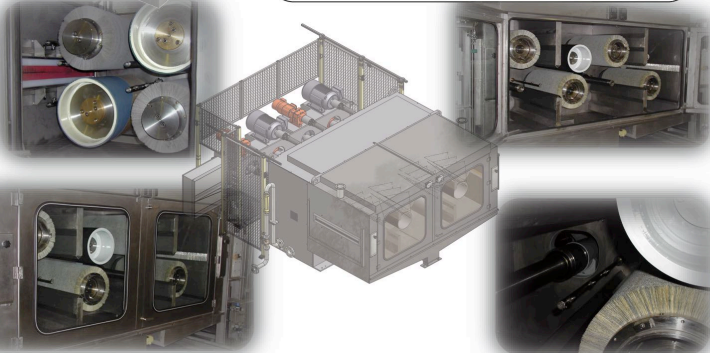


**NARROW STRIP MACHINE**



**CANTILEVER MACHINES**

- Brush machines from 2 to 8 heads for narrow strip - up to 30" wide
- The brush process is visible thru internal illumination and large windows
- Quick brush change permits different finishes



**BM MACHINES**

A new generation of brush machines  
Brush Diameters from 12-16 inches,  
more contact and longer life  
Constant brush dressing to prevent  
grooving through different strip widths



**BM MACHINES**

- Configuration change:
- Brush against brush, brush with or without back up roll
- Brush changes done in 30 minutes
- Accurate control of the brush process

**BM MACHINES**

Exact brush position control and  
visualization  
Water Spray Monitor  
Robust construction and design for  
minimum maintenance



**PLATE CLEANING OR PART DEBURRING**

Abrasive brush machines for cleaning or  
deburring and edge rounding  
- Degrease, Rinse, Brush, Rinse, Dry



This brush machine cleans abrasively  
stainless steel plates.  
This design also produces satin  
finishes on CU / AL Sheets.





**SMALL PARTS DEBURRING**




Further Applications  
deburring  
metal components



 Approaches every application with in-depth knowledge and experience of the abrasive process and machine function.

 Surveys your current process line and applies your continuous improvement initiatives for the future.

 Produce with our mobile test lab, at your facility, results with samples of your material. Our internal labs are available for further testing.

 Delivers recommendations to improve your surface quality.



## OUR MISSION

WE STRIVE TO PRODUCE VALUE, NOT AMASS VOLUME, THUS WE ARE STRUCTURED TO MANUFACTURE CAREFULLY ENGINEERED BRUSHES



ONLY THROUGH CONTINUED TESTING AND VARIING THE PARAMETERS CAN WE CREATE NEW FINISHES ON EXISTING EQUIPMENT

## STATE OF THE ART FACILITY

THE MOST ADVANCED EQUIPMENT HAS BEEN CAREFULLY SELECTED AND INSTALLED TO STREAMLINE OUR MANUFACTURING PROCESS. EXPANDING OUR CAPABILITIES, AND EXPEDITING TURNAROUND



Member of  
  
 National Coil Coating Association



MEMBER OF  
  
 GALVANIZERS ASSOCIATION

CONTACT US AT:  
 816-382-9150  
[INFO@ATLANTECHPROCESS.COM](mailto:INFO@ATLANTECHPROCESS.COM)  
[WWW.ATLANTECHPROCESS.COM](http://WWW.ATLANTECHPROCESS.COM)

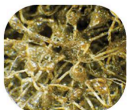


**WIDE-FACE  
 NON-WOVEN & BRISTLE  
 BRUSHES**

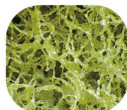
Our experience comes with seven decades of knowledge and experience as a manufacturer and engineer of quality abrasive tools.

Our non-woven brushes are precision made for a consistent surface on your substrate surface.

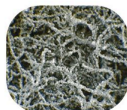
When cleaning and finishing is critical to your process we offer you the broadest selection of materials in the industry.



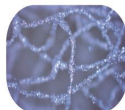
Al<sub>2</sub>O<sub>3</sub>  
Aluminum oxide



Al<sub>2</sub>O<sub>3</sub>  
Aluminum oxide  
(High performance)

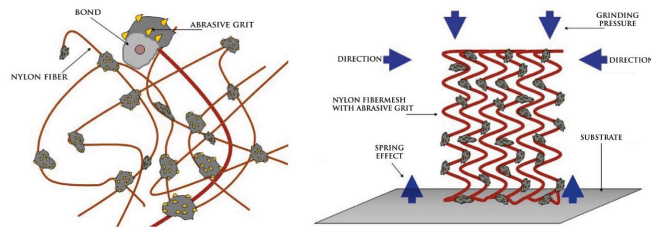


SiC  
Silicon carbide



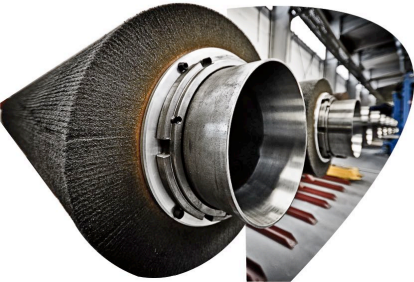
SiC  
Silicon carbide  
(Magnified)

Webbing is selected for the task at hand. Variations in recipes are made to determine how to produce "Your Surface" on Your Material.



What makes one Non-Woven brush better than another? "Better", usually means:

- LONGER LIFE
- GOOD SELF HEALING SURFACE
- CONSISTENT UNIFORM SURFACE FINISH



Falconbrite has researched and tested non-woven material from quality global sources. Our material is custom made to optimize performance on steel, aluminum, copper, galvanized and electroplated materials.

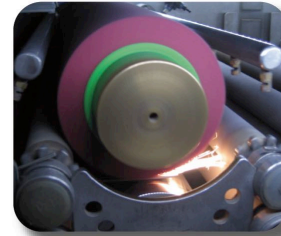
COPPER & BRASS • STEEL • STAINLESS STEEL • ALUMINUM



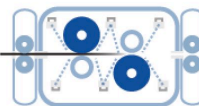
## SURFACE TECHNOLOGY FOR STRIP AND PLATE

DECORATIVE FINISHES • CLEANING • DEBURRING • STRIPPING

## SAMPLE FINISHES ON YOUR MATERIAL



OXIDE REMOVAL • DESCALING • SURFACE ACTIVATION



ATLANTECH PROCESS TECHNOLOGY, INC.  
**FALCONBRITE**



## RESEARCH AND DEVELOPMENT FOR CONTINUOUS IMPROVEMENT

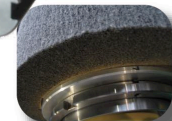
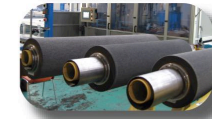
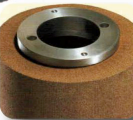
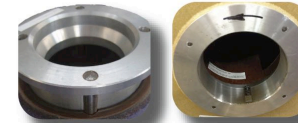
LONG LIFE WEBBING • DYNAMICALLY BALANCED

## LARGEST VARIETY OF FINISHES IN THE INDUSTRY



BRUSHES ARE SERIALIZED, QUALITY DOCUMENTED, SHIPPED IN ENGINEERED PACKAGING

## ENGINEERED BRUSH CORES, FLANGES, AND REPLACEMENT SHAFTS FOR YOUR EQUIPMENT



## REPLACEMENT SHAFTS

### FLANGES

- ALUMINUM
- STEEL
- STAINLESS STEEL
- DELRIN
- UHMW



### SERVICE

WE PROVIDE BRUSH DRESSING AND DYNAMIC BALANCING

